

# Lower Thames Crossing

## 6.2 Environmental Statement Figures

### Figure 12.7 - Opening Year Noise Change Contour (DSOY minus DMOY)

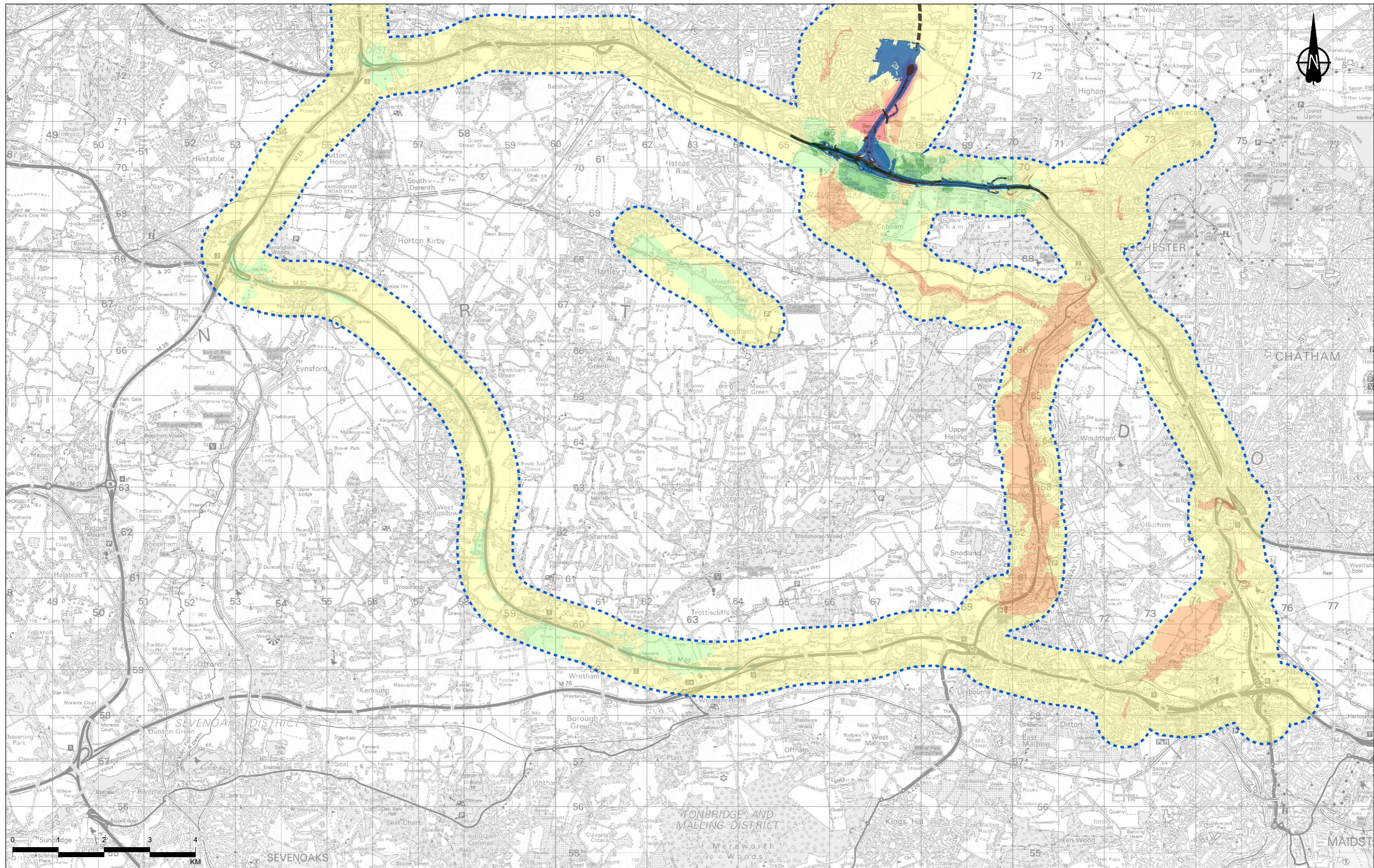
APFP Regulation 5(2)(a)  
Infrastructure Planning  
(Applications: Prescribed Forms and Procedure)  
Regulations 2009  
Volume 6

**DATE:** October 2022

Planning Inspectorate Scheme Ref: TR010032  
Application Document Ref: TR010032/APP/6.2

**VERSION:** 1.0





Contains Ordnance Survey data. © Crown copyright and database rights 2022. Ordnance Survey 100030649

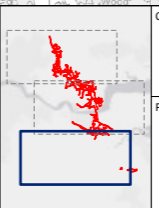
P02	S8	14/10/2022	DCO Application	CD	PT	BF
Rev	Status	Rev. Date	Purpose of revision	Drawn	Chkd	Apprvd

**Legend**

- Route Alignment
- Earthworks
- Bored Tunnel
- Operational Road Traffic Noise Study Area

- Major Beneficial Change ( -5.0dB(A))
- Moderate Beneficial Change ( -3.0 to -4.9 dB(A))
- Minor Beneficial Change ( -1.0 to -2.9dB(A))
- No Change/Negligible (< 1.0dB(A))
- Minor Adverse Change ( 1.0 to 2.9dB(A))
- Moderate Adverse Change ( 3.0 to 4.9 dB(A))
- Major Adverse Change ( 5.0dB(A))

Abbreviations:  
 1) DSOY = Do Something Opening Year  
 2) DMOY = Do Minimum Opening Year

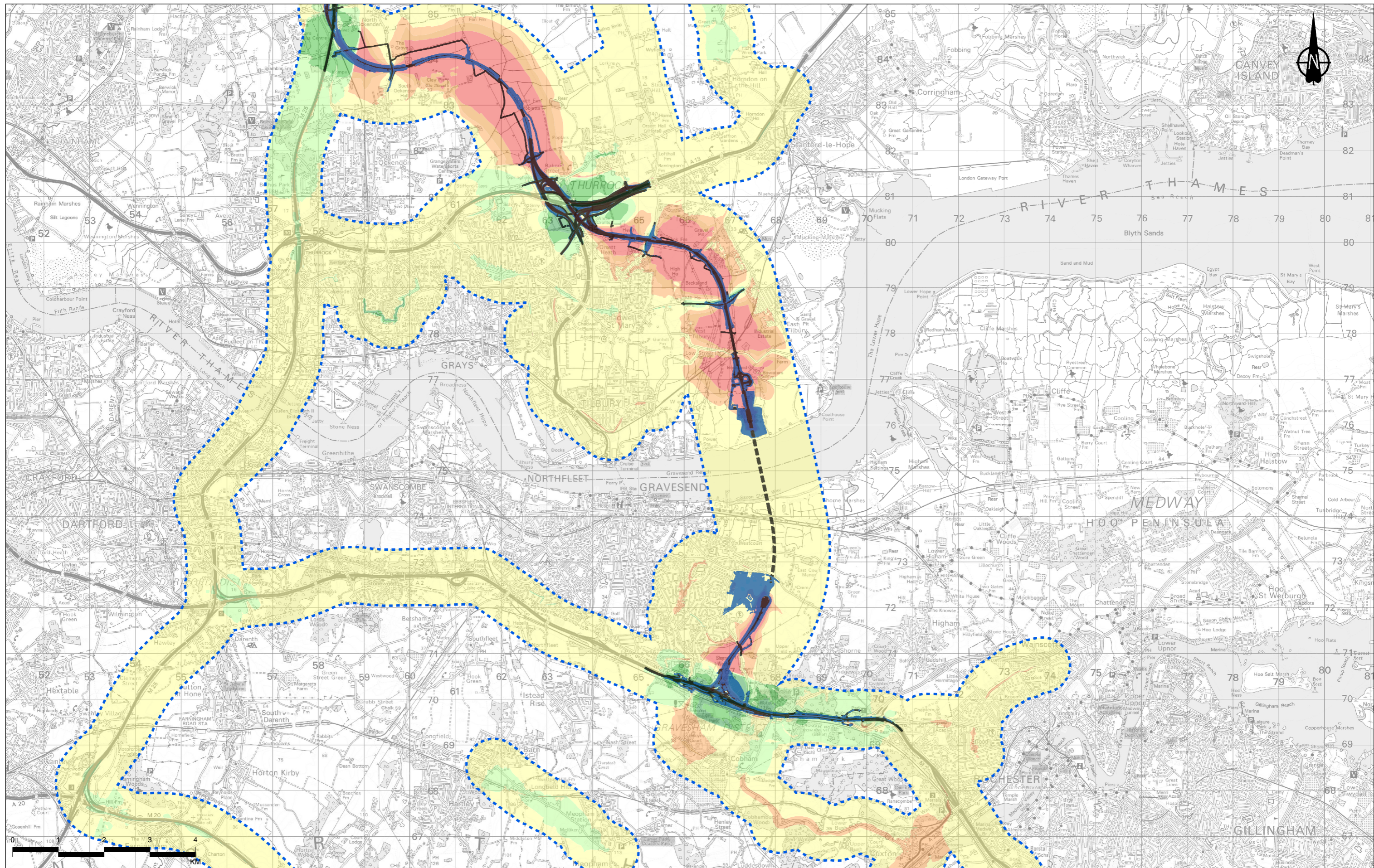


Client: national highways

Project: **LOWER THAMES CROSSING**

Status	DCO APPLICATION	Original Size	A3	Revision	P02
Application Document Number	TR010032/APP/6.2	Scale	1:75,000		
Drawing Title	Figure 12.7 - Opening Year Noise Change Contour (DSOY minus DMOY)				
	Page 1 of 3				
Drawing Number	HE540039-CJV-EBD-SZP_EGNE0000000-DR-LE-50130				





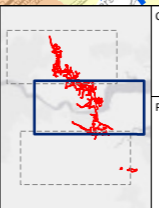
Contains Ordnance Survey data. © Crown copyright and database rights 2022. Ordnance Survey 100030649

P02	S8	14/10/2022	DCO Application	CD	PT	BF
Rev	Status	Rev. Date	Purpose of revision	Drawn	Chkd	Apprvd

	Route Alignment
	Earthworks
	Bored Tunnel
	Operational Road Traffic Noise Study Area

	Major Beneficial Change ( -5.0dB(A) )
	Moderate Beneficial Change ( -3.0 to -4.9 dB(A) )
	Minor Beneficial Change ( -1.0 to -2.9dB(A) )
	No Change/Negligible ( < 1.0dB(A) )
	Minor Adverse Change ( 1.0 to 2.9dB(A) )
	Moderate Adverse Change ( 3.0 to 4.9 dB(A) )
	Major Adverse Change ( 5.0dB(A) )

Abbreviations:  
 1) DSOY = Do Something Opening Year  
 2) DMOY = Do Minimum Opening Year



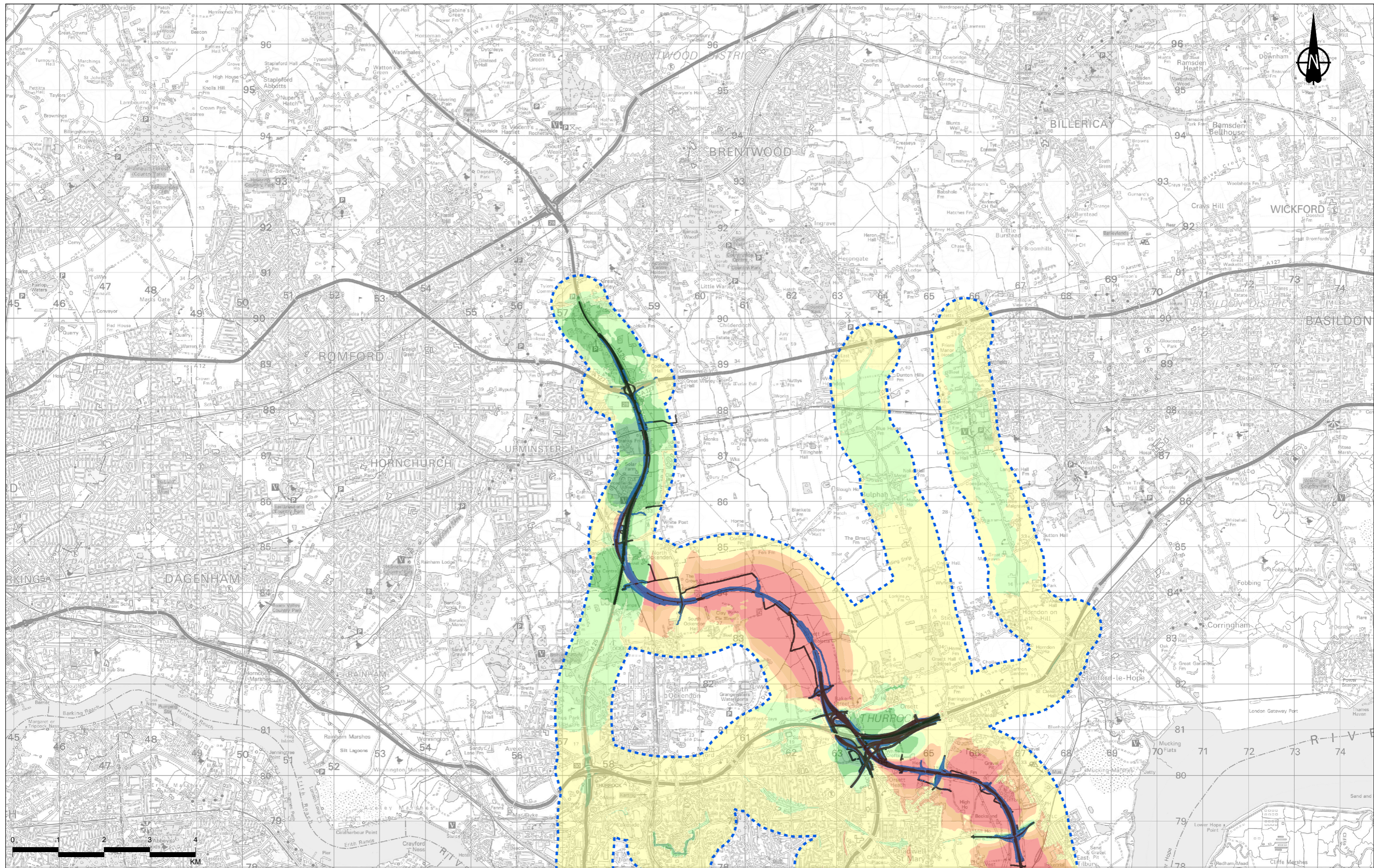
Client: national highways

Project: **LOWER THAMES CROSSING**

Status	DCO APPLICATION	Original Size	A3	Revision	P02
Application Document Number	TR010032/APP/6.2	Scale	1:75,000		
Drawing Title	Figure 12.7 - Opening Year Noise Change Contour (DSOY minus DMOY)				
Drawing Number	HE540039-CJV-EBD-SZP_EGNE0000000-DR-LE-50130				

Page 2 of 3





Contains Ordnance Survey data. © Crown copyright and database rights 2022. Ordnance Survey 100030649

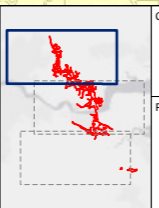
Rev	Status	Rev. Date	Purpose of revision	Drawn	Checked	Approved
P02	S8	14/10/2022	DCO Application	CD	PT	BF

**Legend**

- Route Alignment
- Earthworks
- Bored Tunnel
- Operational Road Traffic Noise Study Area

- Major Beneficial Change ( -5.0dB(A) )
- Moderate Beneficial Change ( -3.0 to -4.9 dB(A) )
- Minor Beneficial Change ( -1.0 to -2.9dB(A) )
- No Change/Negligible ( < 1.0dB(A) )
- Minor Adverse Change ( 1.0 to 2.9dB(A) )
- Moderate Adverse Change ( 3.0 to 4.9 dB(A) )
- Major Adverse Change ( 5.0dB(A) )

Abbreviations:  
 1) DSOY = Do Something Opening Year  
 2) DMOY = Do Minimum Opening Year



Client: national highways

Project: **LOWER THAMES CROSSING**

Status	DCO APPLICATION	Original Size	A3	Revision	P02
Application Document Number	TR010032/APP/6.2	Scale	1:75,000		
Drawing Title	Figure 12.7 - Opening Year Noise Change Contour (DSOY minus DMOY)				
Drawing Number	HE540039-CJV-EBD-SZP_EGNE0000000-DR-LE-50130				

Page 3 of 3

Z:\Environment\Environmental Statement\12. Noise and Vibration\HE540039-CJV-ENV-SZP\_EGNE0000000-DR-LE-50130 - 12.7 - Opening Year Noise Change Contour (DSOY minus DMOY).aprx



If you need help accessing this or any other National Highways information, please call **0300 123 5000** and we will help you.

© Crown copyright 2022.

You may re-use this information (not including logos) free of charge in any format or medium, under the terms of the Open Government Licence. To view this licence:

visit [www.nationalarchives.gov.uk/doc/open-government-licence/](http://www.nationalarchives.gov.uk/doc/open-government-licence/)

write to the **Information Policy Team, The National Archives, Kew, London TW9 4DU**, or email [psi@nationalarchives.gsi.gov.uk](mailto:psi@nationalarchives.gsi.gov.uk).

Mapping (where present): © Crown copyright and database rights 2022 OS 100030649. You are permitted to use this data solely to enable you to respond to, or interact with, the organisation that provided you with the data. You are not permitted to copy, sub-license, distribute or sell any of this data to third parties in any form.

If you have any enquiries about this publication email [info@nationalhighways.co.uk](mailto:info@nationalhighways.co.uk) or call **0300 123 5000\***.

\*Calls to 03 numbers cost no more than a national rate call to an 01 or 02 number and must count towards any inclusive minutes in the same way as 01 and 02 calls. These rules apply to calls from any type of line including mobile, BT, other fixed line or payphone. Calls may be recorded or monitored.

Printed on paper from well-managed forests and other controlled sources when issued directly by National Highways.

Registered office Bridge House, 1 Walnut Tree Close, Guildford GU1 4LZ

National Highways Company Limited registered in England and Wales number 09346363